

## Nålepude gylden-brun i stramaj

### Materialer:

Stramaj stof 1. tråd 63x63 sting

Uldgarn Zefyr 3 creamfarvet, 2  
kobber og 1 mørk brun

Stramaj nål.

Fiberfyld.

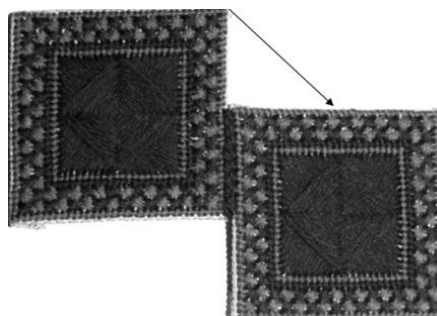
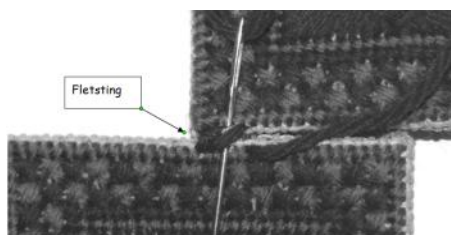


### Fremgangsmåde:

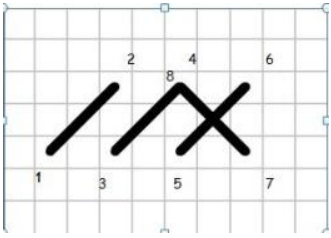
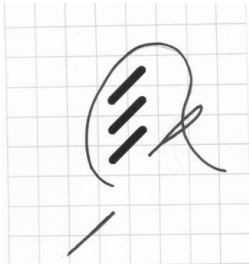
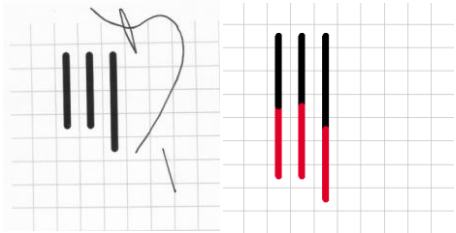
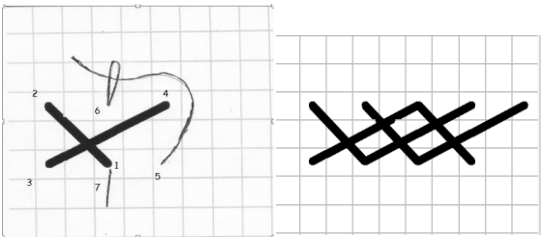
1. Begynd arbejdet ca. 2 cm inde og nede i øverste venstre hjørne.
2. Begynd med den ternede kant rundt, denne kant syes med korssting over 2 tråde med cream og mørkbrun.
3. Sy derefter med petit point kanten inden i firkanten med kobber og mørkebrun. Derefter syes den mørkebrune kant yderst.
4. Sy med gobelin sting stjernen i midten med kobber og cream.

### Montering:

1. Træk broderiet i facon hvis det har trukket sig skævt.
2. Klip stramajstoffet af ca. 1 cm fra broderiet, Zik-zak evt. kanterne. Buk kanterne rundt så der er en tråd til at sy hen over.
3. Marker midten på det ene stykke. Læg midten af det ene stykke til hjørnet af det andet stykke.
4. Sy stykkerne sammen med fletsting.
5. Lad en åbning stå.
6. Kom fiberfyld i nålepuden.
7. Luk åbningen med fletsting.



# Sting vejledning til gylden-brun nålepude.

<p>Korssting over 2 tråde</p>	 <p>A grid diagram showing a cross-stitch pattern over two threads. The pattern consists of a central 'X' shape formed by two diagonal lines. The threads are numbered 1 through 7, indicating the sequence of stitches: 1 (downward diagonal), 2 (upward diagonal), 3 (downward diagonal), 4 (upward diagonal), 5 (downward diagonal), 6 (upward diagonal), and 7 (downward diagonal).</p>
<p>Petit point</p>	 <p>A diagram illustrating the Petit point stitch. It shows a series of three parallel diagonal lines on a grid, with a curved line indicating the path of the needle and thread to create a smooth, rounded shape.</p>
<p>Gobelin</p>	 <p>A diagram illustrating the Gobelin stitch. It shows three vertical lines on a grid. The first line is black, the second is black with a red bottom section, and the third is black with a red bottom section. A curved line indicates the path of the needle and thread to create a smooth, rounded shape.</p>
<p>Fletsting</p>	 <p>A diagram illustrating the Fletsting stitch. It shows a series of diagonal lines on a grid, with a curved line indicating the path of the needle and thread to create a smooth, rounded shape. The threads are numbered 1 through 7, indicating the sequence of stitches: 1 (downward diagonal), 2 (upward diagonal), 3 (downward diagonal), 4 (upward diagonal), 5 (downward diagonal), 6 (upward diagonal), and 7 (downward diagonal).</p>



## Mønster til gylden-brun nålepude.

