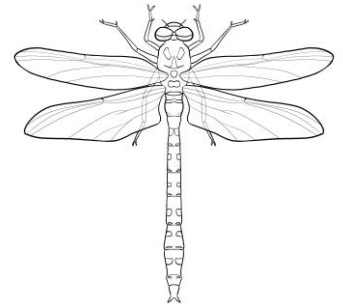


Del i stavelser

Prik og del i stavelser.

Skriv ordene på linjerne.



bi

---

sommerfugl

---

myg

---

myre

---

guldsmed

---

bille

---

mariehøne

---

ørentvist

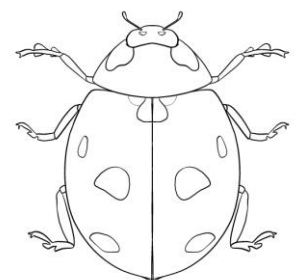
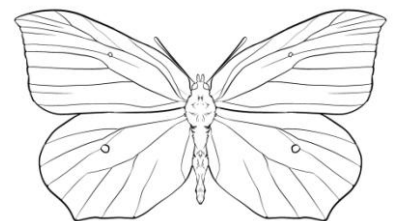
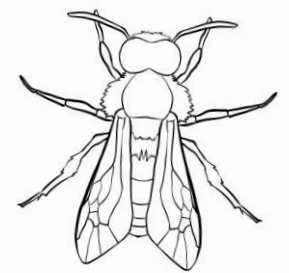
---

bistade

---

hveps

---



Del i stavelser **LØSNING**

Prik og del i stavelser.  
Skriv ordene på linjerne.

bi \_\_\_\_\_

sommerfugl \_\_\_\_\_

myg \_\_\_\_\_

myre \_\_\_\_\_

guldsmed \_\_\_\_\_

bille \_\_\_\_\_

mariehøne \_\_\_\_\_

ørentvist \_\_\_\_\_

bistade \_\_\_\_\_

hveps \_\_\_\_\_

