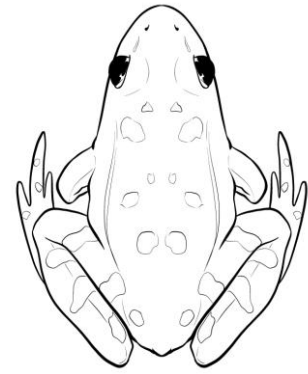


Del i stavelser

Prik og del i stavelser.

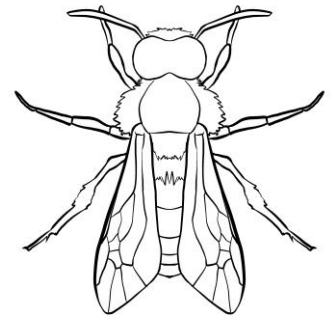
Skriv ordene på linjerne.

frø



blad

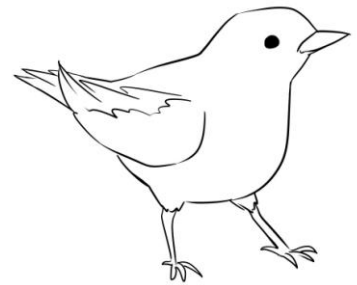
bi



kanin

påskelilje

solsort



blåmejse

tulipan

sommerfugl

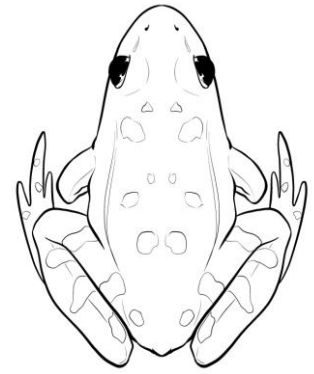
musvit



Del i stavelser **LØSNING**

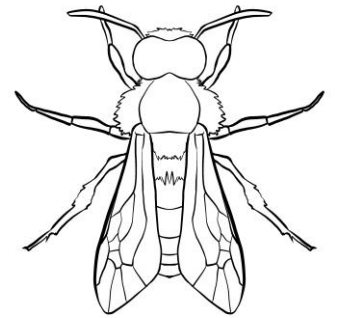
Prik og del i stavelser.
Skriv ordene på linjerne.

frø



blad

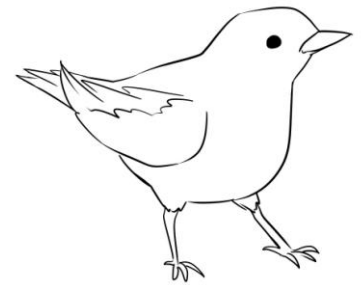
bi



kanin

påskelilje

solsort



blåmejse

tulipan

sommerfugl

musvit

